

**About your instructor...**  
**Cathy Holway, PT, DPT**  
**Doctor of Physical Therapy**

Cathy Pliscof Holway is an internationally recognized physical therapist, educator and author in the healthcare field of integrative manual therapies.

She received her BS and certificate in Physical Therapy from Russell Sage College/Albany Medical College School of Physical Therapy, Troy, NY, in 1979. She received her Doctor of Physical Therapy degree from Boston University in 2008.

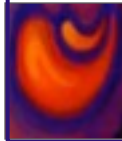
Her interest in integrative manual therapies led her to develop her own form of cranial work, and in 1999 she began teaching the Essential Mouthwork class and founded Sacred Spaces Seminars, which expanded to a broad range of innovative classes for therapists and caregivers.

Upon completion of her doctoral studies, she founded The Neurovascular Institute, Inc., to provide well-researched, scientifically-based medical education that is immediately applicable to clinical practice and fosters the professional growth and integrity of licensed medical professionals.

Dr. Cathy continues to integrate clinical work with research, development and instruction in Neurovascular Integration. She invites you to feel the flow of health through this special work!

**For More Information:**  
**Contact Dr. Cathy Holway**  
call: 561.252.0943  
Click: [www.nvinstitute.com](http://www.nvinstitute.com)  
[drcathyholway@gmail.com](mailto:drcathyholway@gmail.com)

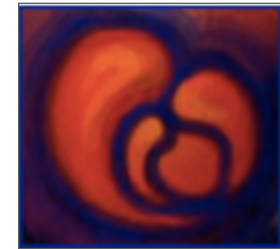
Neurovascular Institute, Inc.  
PO Box 31778  
Palm Beach Gardens, FL 33420



Get Your Continuing  
Education Hours here!  
Visit  
[www.nvinstitute.com](http://www.nvinstitute.com)  
For upcoming classes!

The Neurovascular Institute, Inc.  
and  
Cathy Holway, PT, DPT  
present

# Clinical Foundations Class



**Manual Therapy  
for  
Neurosensory**

**Relief & Regulation**

**2018 Class Schedule**

**\*AOTA approved provider!\***  
**1.3 AOTA CEUs**



# Welcome to the Clinical Foundations Class

## Clinical Foundations Course Description

This class brings important information about the interactions of brain, body and mind that impact our daily functions. Course content and techniques are immediately clinically applicable for the beginner through advanced therapist.

From the osteopathic and cranial stories of manual therapies, we advance to ground our work in the latest scientific understanding of how the nervous system presides over body and mind, and how our manual approach engages and rebalances those interactions.

We explore the neuroscience of our Profound Neutral touch, providing alternative sensory input to facilitate optimal brain organization and output to peripheral tissues and structures.

Learn how the touch of Profound Neutral can transform your healthcare practice as we integrate these neurosensory techniques throughout the body.

### Contact Hours:

Upon completion of this class, participants will be give a certificate of attendance for 16.5 continuing education hours (CEHs). Cathy Holway, PT, DPT is approved by the National Certification Board for Therapeutic Massage & Bodywork (NCBTMB) as a continuing education Approved Provider, #451266-10. NVI, Inc is an AOTA approved CE provider (#7014). This class earns 1.3 AOTA CEUs. The assignment of AOTA CEUs does not imply endorsement of specific course content, products, or clinical procedures by AOTA.

*Special Needs: if you require specific accommodations to participate in class, please notify us in writing two weeks prior to attendance.*

## Course Outline

**Day 1:** 8:30 am: Registration  
9:00 am: Class overview, intentions and goals  
9:25 am: Review of manual therapy approaches; palpation skills critical to our work  
10:15 am: Break  
10:30 am: Intro to neuroscience of peripheral stimulus for neurological reorganization  
11:20 am: Profound Neutral (PN) lab  
11:45 am: Break  
11:55 am: "Bowls & Domes" A/P for neurosensory reorganization from foot to head.  
12:45 pm: Lunch break (on your own)  
2:00 pm: "Bowls & Domes" lab explanation & demo  
2:55 pm: "Bowls & Domes" lab exercise  
3:45 pm Break  
4:00 pm: Bone lecture, specific to LEs and pelvis  
4:25 pm: Review LE/pelvis lab protocol & demo  
4:50 pm: LE/pelvis lab  
5:40 pm: End of day Q/A

**Day 2:** 9:00am: Day 1 Review, Day 2 intro.  
9:25 am: Cranial Base A/P  
10:15 am: Break  
10:30 am: Expl/Demo of "Cervical/Cranial Base" lab  
11:20 am: "Cervical/Cranial Base" lab  
12:10 pm: Break  
12:20 pm: Intro to cerebrovascular circulation  
12:45 pm: Lunch break (on your own)  
2:00 pm: A/P cranial bones, intracranial membranes and cerebrovascular system  
2:50 pm: "Cervical/Cranial" lab directions, demo  
3:15 pm: "Cervical/Cranial" lab  
4:05 pm: Break  
4:20 pm: Arm/shoulder A/P and cervical function  
4:45 pm: "Arm Work" lab demo, "Quick Flow" final lab instruction  
5:10 pm: Arm Work lab; "Quick Flow" final lab, end of class Q/A  
6:00 pm: Class adjourns.

### Learning Outcomes

Upon completion of this class students will be able to:

- \* Demonstrate PN peripheral manual input to optimize central neurological responses
- \* Identify developmental/functional processes of pelvic, thoracic, cervical and cranial structures and impact of disruptive events on mobility and function
- \* Assess, plan and implement an appropriate therapeutic intervention to support neurosensory reorganization and improve function

*Instructor assessment of lab activities determines satisfactory completion of requirements for CEHs/CEUs.*

Registration is due 2 weeks before class.

**Tuition for this class is \$450.**

A \$175 deposit will hold your place. Early Registration Discount: \$400 until dates listed below (paid in full).

Class hours: Registration Day 1 8:30am  
Class 9:00am –6:00pm both days

**Feb. 16-17, 2018, Denver CO**

*Early Reg. Discount until 2/1/18*

To register, send check or Visa/MC/Disc# to

**Cathy Holway, PT, DPT**

**POBox 31778, PalmBchGdns, FL 33420**

**Ph: 561.252.0943 Fax 561.627.6734**

*or register online at*

**[www.nvinstitute.com](http://www.nvinstitute.com)**

Name: \_\_\_\_\_

Address: \_\_\_\_\_

City: \_\_\_\_\_ State: \_\_\_\_\_ Zip: \_\_\_\_\_

Phone: \_\_\_\_\_

Class Date/Location: \_\_\_\_\_

Visa/MC/Disc# \_\_\_\_\_

Exp \_\_\_\_\_ CVI \_\_\_\_\_ Amount \_\_\_\_\_

Signature: \_\_\_\_\_

Email: \_\_\_\_\_

Cancellations: tuition less \$50 processing fee refunded up to 2 weeks before class (written notifications only). No refunds after that date. Paid tuition may be transferred to future NVI class, product or service. NVI reserves the right to cancel any course with due cause and refund tuition in full within 30 days of cancelled class. NVI is not responsible for weather or travel disruptions or registrant travel expenses.

***Thank you! See you soon!***